

LILLIPUT®

RM-7029S

2×7" 1920×1200 Full HD
Easy dual screen monitoring with real-time accurate scope viewing



2×7" HDMI2.0 & 3G-SDI Rack Mount Monitor

Rack mount monitor for broadcast & live streaming.
Application for video wall & broadcast trucks.



Full HD Independent Dual Display

The 7" 16:10 LCD panel with 1920×1200 full HD resolution, 2000:1 high contrast, 160° viewing angles, 400 cd/m² brightness, which offers outstanding viewing experience.

7"

7"



SDI & HDMI In/Out

Monitoring up to 1080p 60Hz SDI and 2160p 60Hz HDMI videos.
Just add signal cables to expand more diverse display solutions through loop output interfaces. Help creating a camera video wall.

3G-SDI

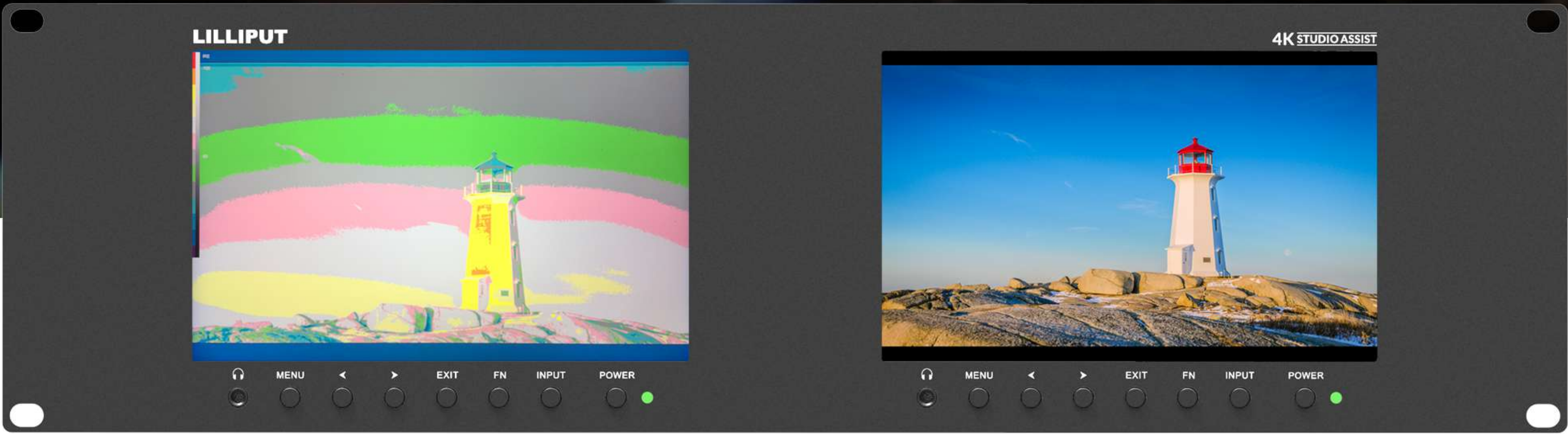
HDMI
2.0

LAN

Tally

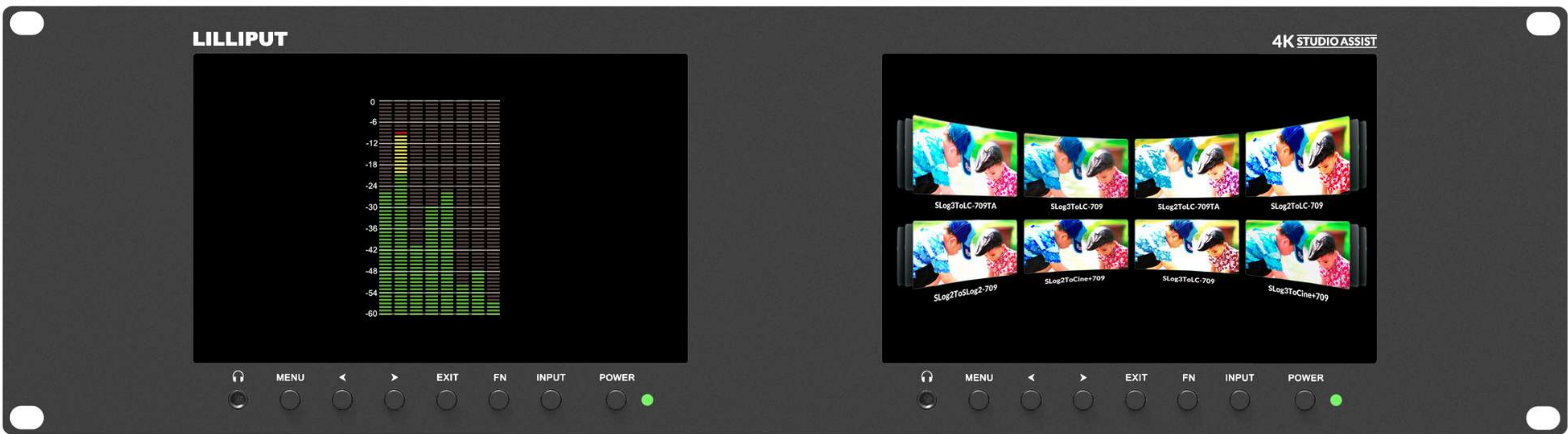
Precise Scope Views

The video production manager can analyze the quality of image by calling up different scopes, for example, false color, level meter, histogram. And both video sources are displayed independently.



Auxiliary Functions

Provides plenty of auxiliary functions for taking photos and making movies, such as peaking, exposure and time code.



Each display is a independent device that receives the video source and works with different functions separately, for example, different Level Meter and 3D-LUT.

3D-LUT

3D-LUT is a table for quickly looking up and output specific color data. By loading different 3D-LUT tables, it can quickly recombine color tone to form different color styles.

Built-in 3D-LUT, featuring 17 default logs and 6 user logs.



3D-LUT LOAD

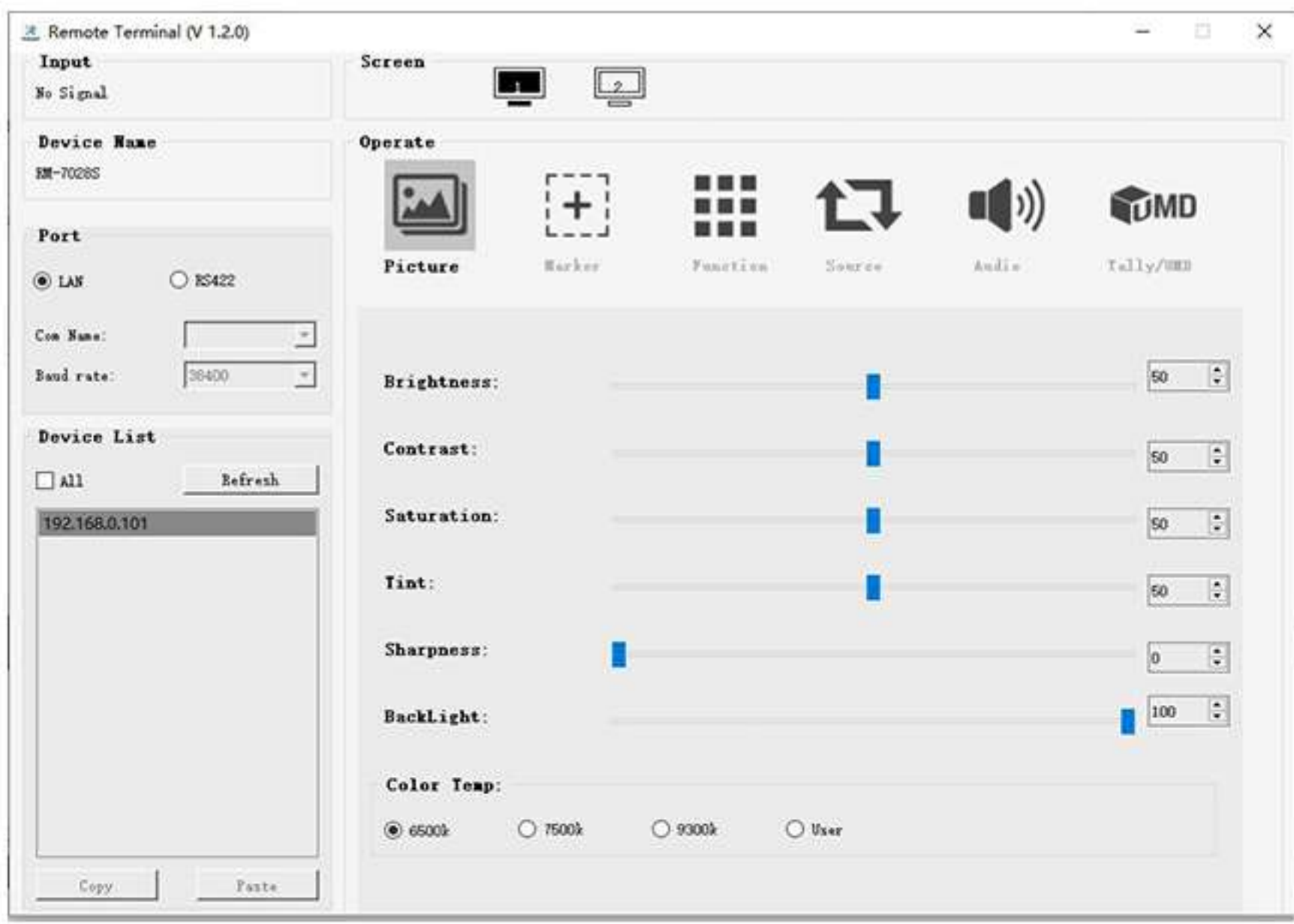
Supports loading .cube file via USB flash disk.

Easy Remote Control

All monitors can be perfectly adjusted by a connected computer under the control of software. So you can focus on other operation on the workbench at the same time.

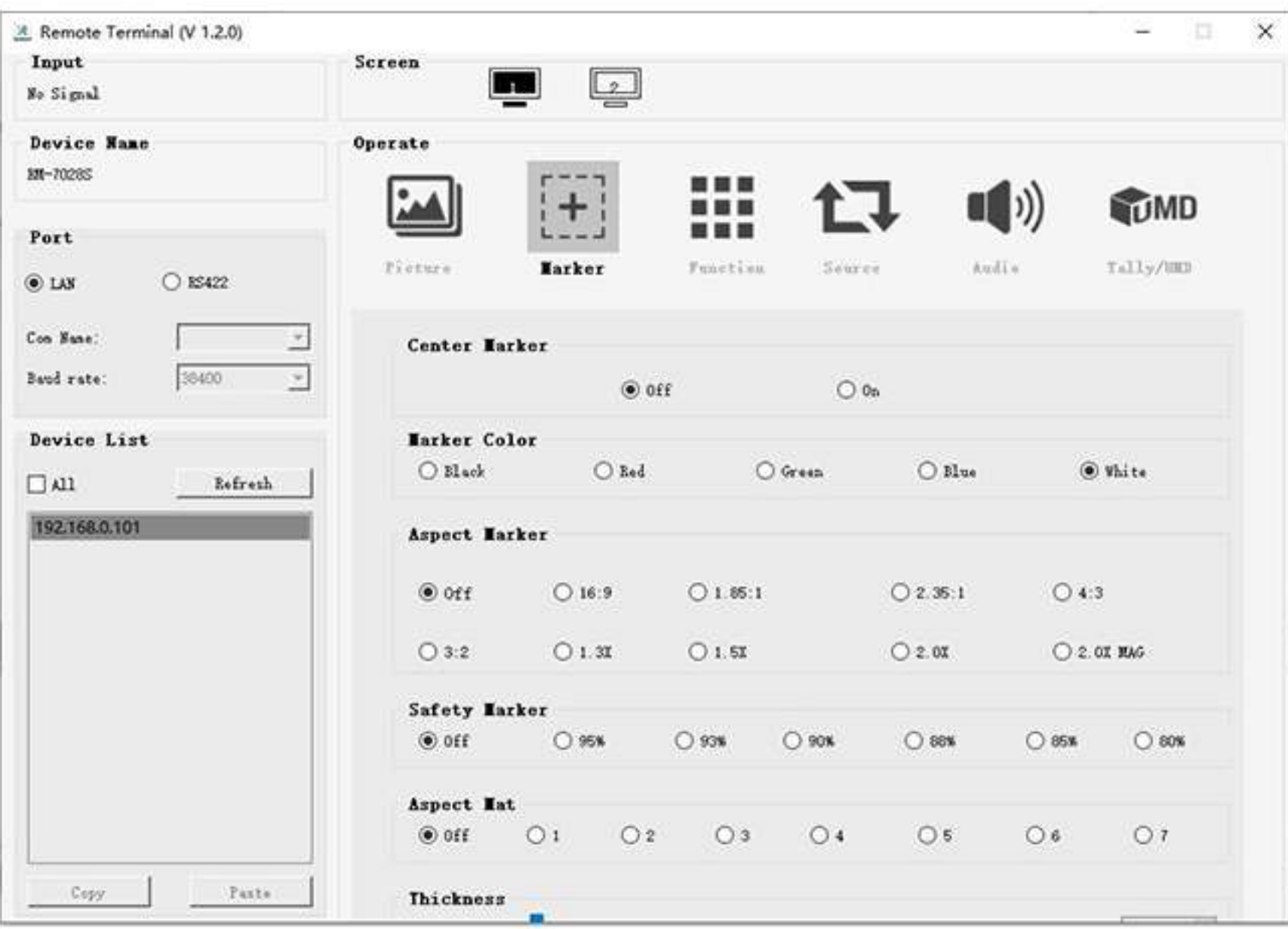


Monitor connects a working computer through LAN and recognize each other after adjusting the IP address. Then link start immediately.



Picture

Display items can be controlled include, Brightness, Contrast, Saturation, Tint, Sharpness, Backlight, Color Temp.



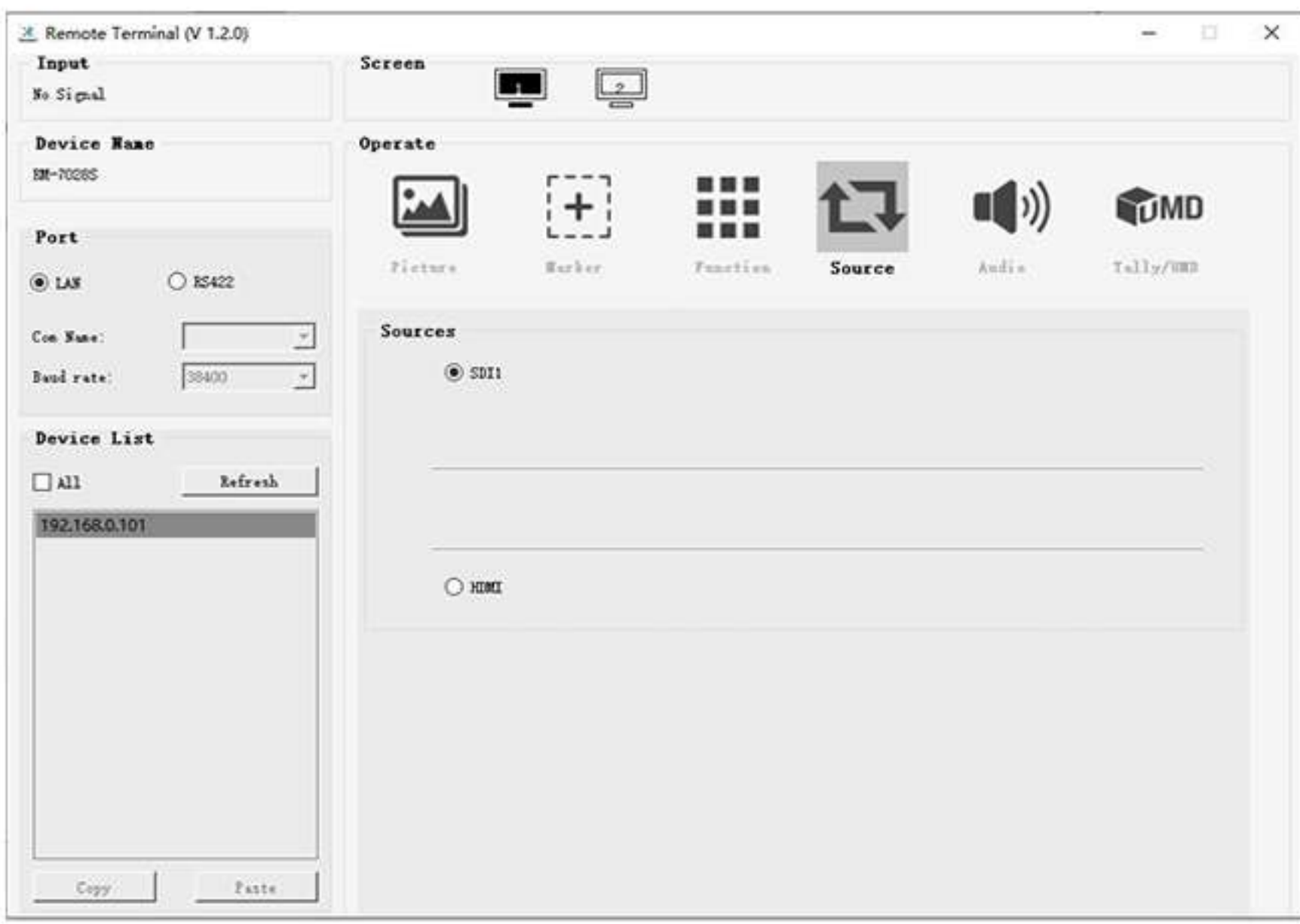
Marker

Image markers can be controlled include, Center Marker, Marker Color, Aspect Marker, Safety Marker, Aspect Mat and Thickness.



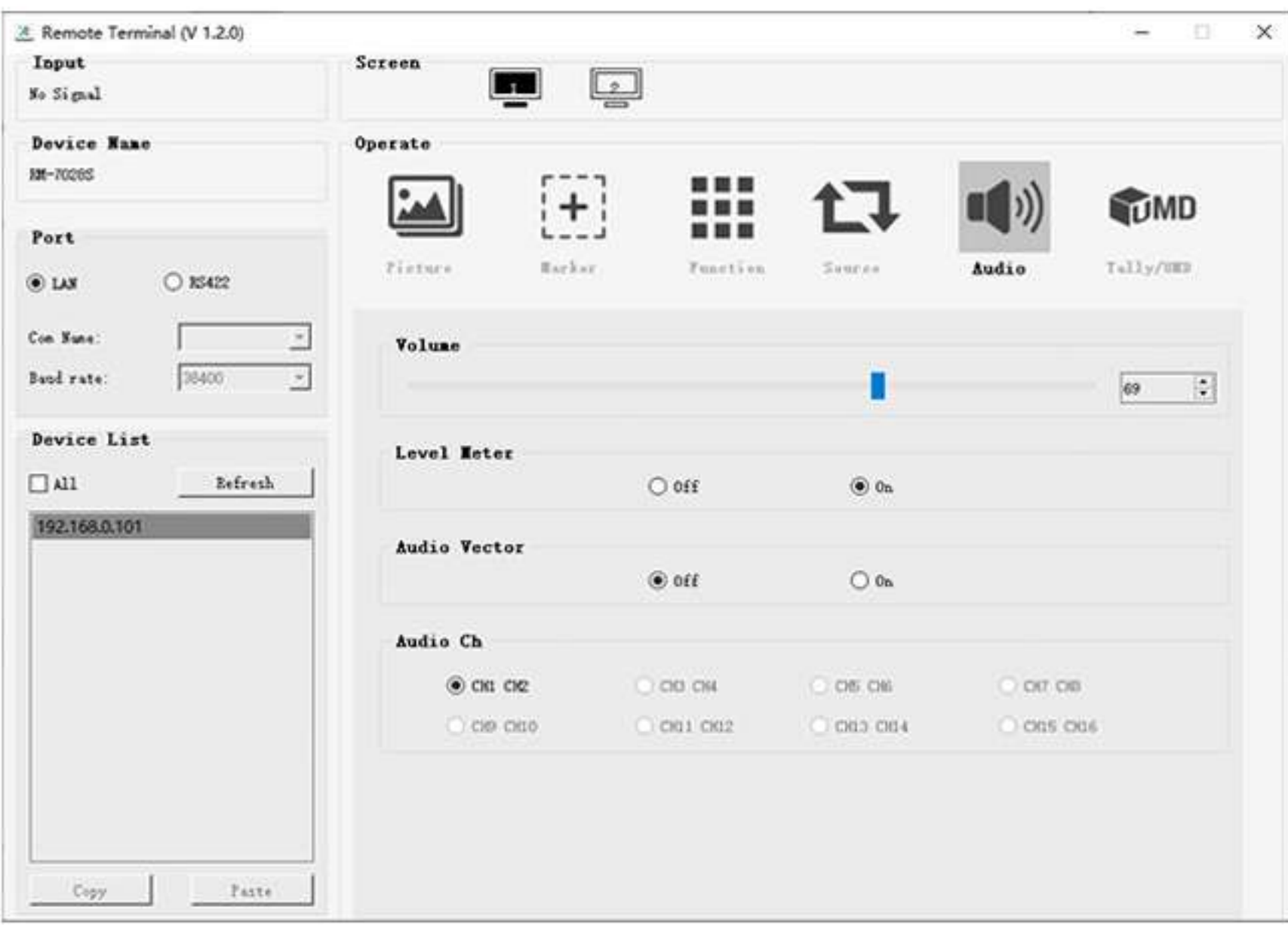
Function

The built-in function can be controlled include, Scan Mode, Overscan, Freeze, Aspect, H/V Delay, Check Field, Timecode, Color Bar, Peaking, Exposure...



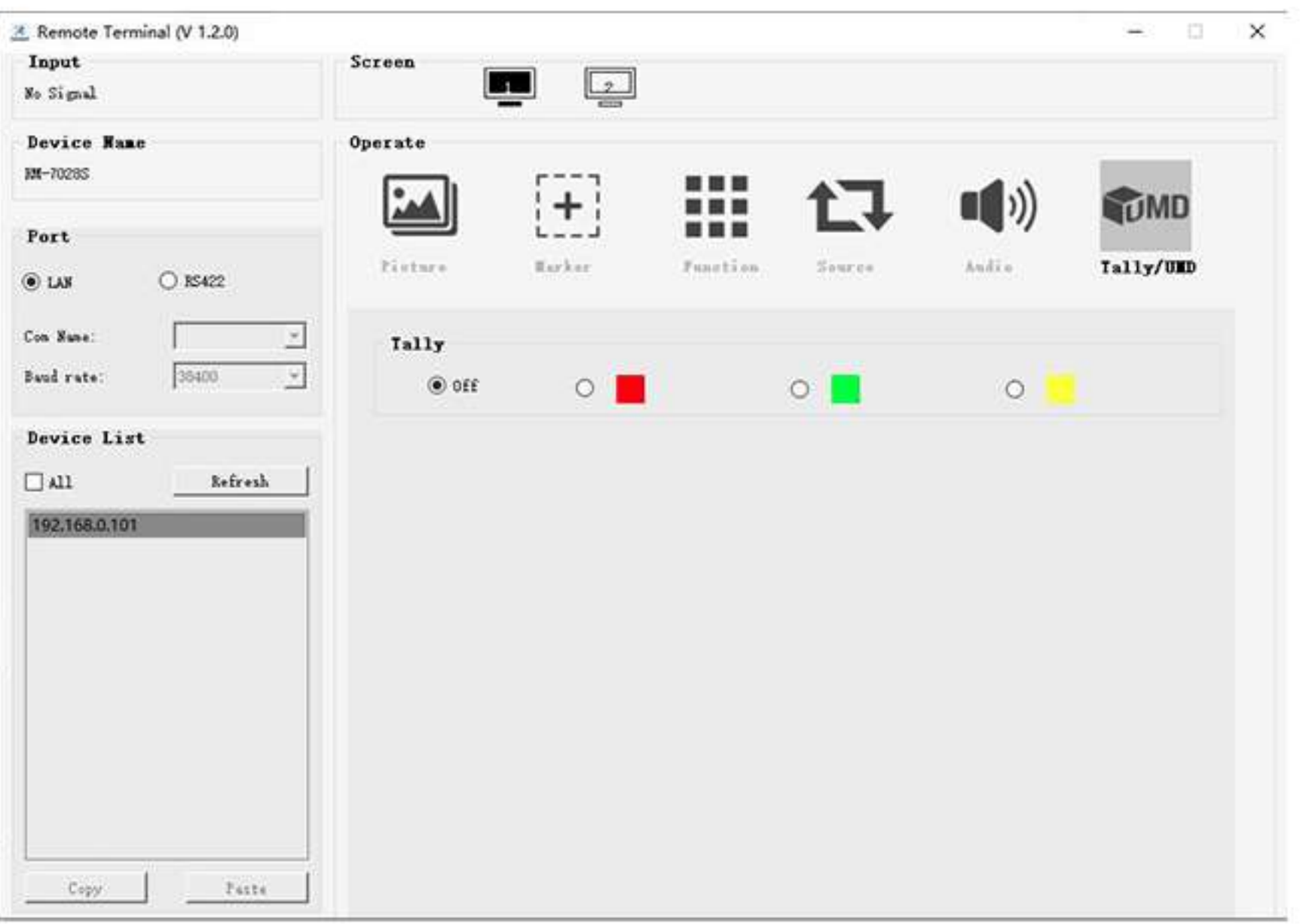
Source

Video sources can be controlled include, HDMI and SDI.



Audio

Audio items can be controlled include, Volume, Level Meter, Audio Vector and Audio Ch.



Tally/UMD

Tally function can be controlled under Tally/UMD mode. The UMD function is not available for this device.



◀ Model NO.: RM-1730S

◀ Model NO.: BM150-4KS

◀ Model NO.: RM-0208S

◀ Model NO.: RM-7029S

3RU Rack Mount

Suitable for 19 inch width cabinet installation with 3RU mounting height and slim metal design, occupying only a small part of volume. Its flat front panel is designed to bring sufficient viewing angle.



Broadcast Truck

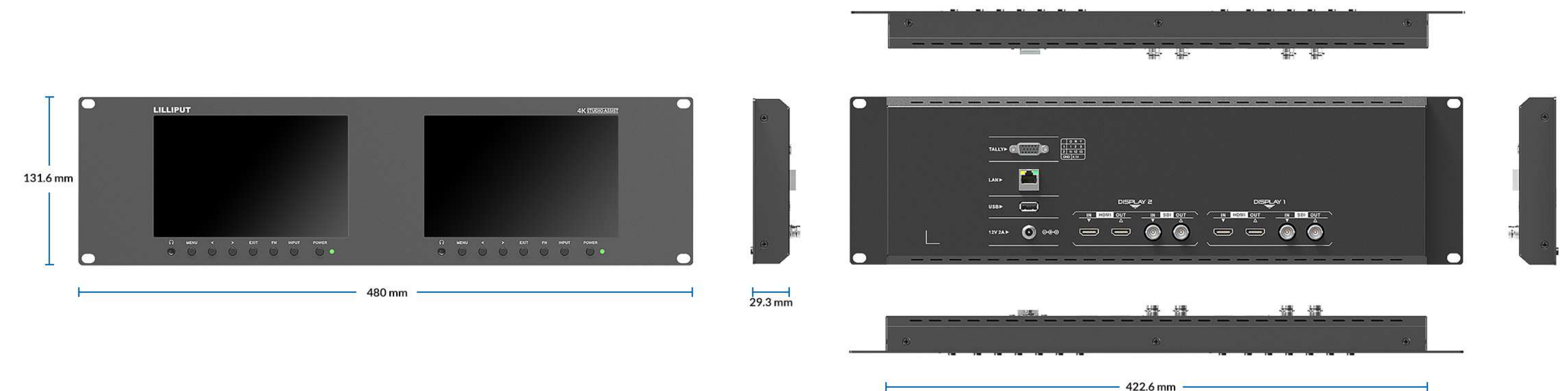


Post Production



Fly Away Kits

Delicate Milled Structure



SPECIFICATIONS

DISPLAY	Panel	2×7"
	Physical Resolution	1920×1200
	Aspect Ratio	16:10
	Brightness	400cd/m ²
	Contrast	2000:1
INPUT	Viewing Angle	160°/ 160° (H/V)
	Supported Log Formats	Slog2 / Slog3, ArriLog, Clog, Jlog, Vlog, Nlog or User...
	LUT Support	3D-LUT (.cube format)
	3G-SDI	2
	HDMI	2 (HDMI 2.0, supports up to 4K 60Hz)
OUTPUT	LAN	1
	3G-SDI	2
FORMATS	HDMI	2 (HDMI 2.0, supports up to 4K 60Hz)
	SDI	1080p 60/50/30/25/24, 1080pSF 30/25/24, 1080i 60/50, 720p 60/50...
AUDIO	HDMI	2160p 60/50/30/25/24, 1080p 60/50/30/25/24, 1080i 60/50, 720p 60/50...
	Ear Phone Slot	2
POWER	Current	1.5A
	Input Voltage	DC 10-24V
	Power Consumption	≤16W
ENVIRONMENT	Operating Temperature	0°C~50°C
	Storage Temperature	-20°C~70°C
OTHER	Dimension (LWD)	480×131.6×29.3 mm
	Weight	2.2kg

ACCESSORIES

STANDARD



12V 2A DC Power Adapter



Tally Connector



Electronic User Manual

www.lilliput.com

ZHANGZHOU LILLIPUT ELECTRONIC TECHNOLOGY CO., LTD.
Add : Fuqi North Road, No.26, Zhang Zhou, Fu Jian, 363005, China
Tel: +86-596-2109661/2109323 Facebook: @lilliputmonitor Email: sales@lilliput.com

