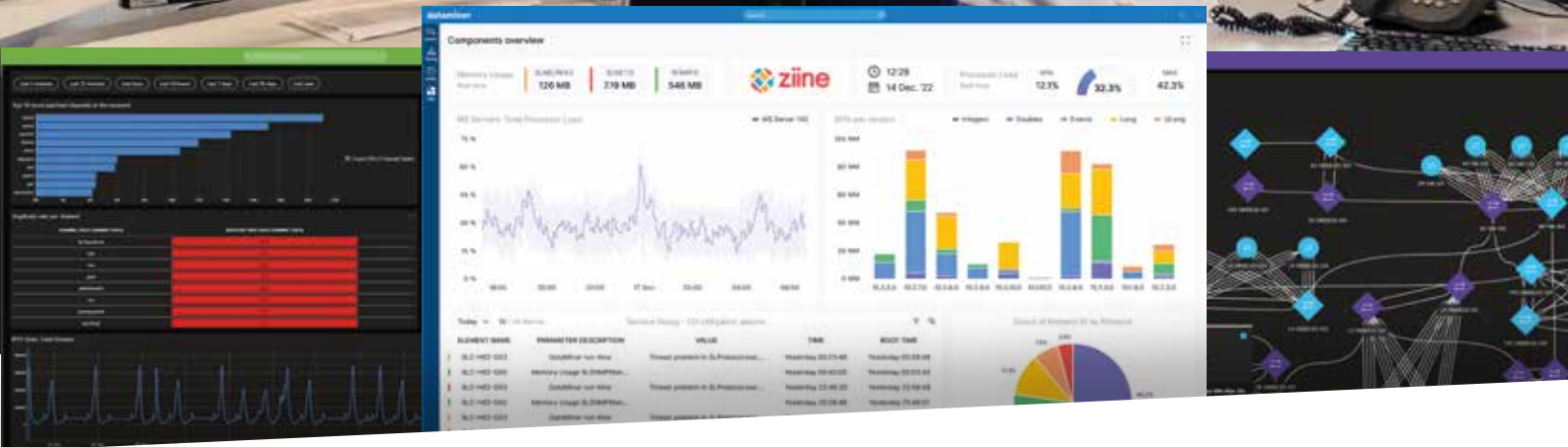


WORK
**BETTER
FASTER
CHEAPER**
WITH DATAMINER



**MANAGE THE ENTIRE
OPERATIONS STACK**



**INTEGRATE
ANY DATA SOURCE**



**BECOME A
DATA-DRIVEN
OPERATION**



**AI-POWERED
SYSTEMS**

DataMiner provides a unified view of your entire operation

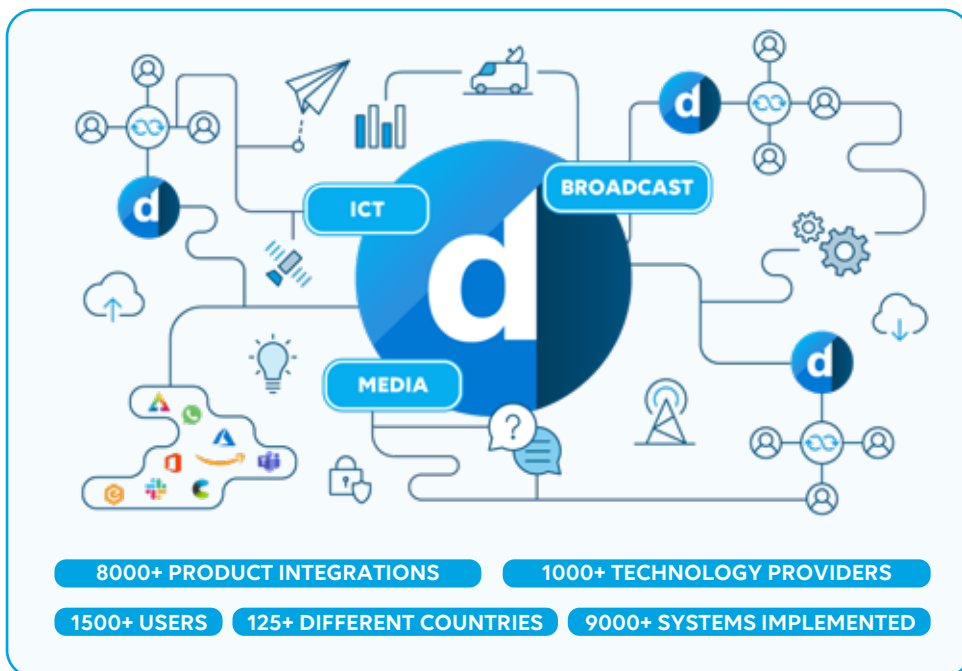
DataMiner is a **versatile network management software platform** designed for media, broadcast, satcom, and telecom networks. It enables **comprehensive monitoring** and **management of network operations**, supporting a wide array of devices and protocols for a unified network view.

Addressing your network challenges

- A fragmented view of network operations due to disparate monitoring systems.
- Complicated root cause analysis processes when systems lack cohesion.
- Obstacles in assessing service impact during outages or disruptions.
- Struggles in maintenance scheduling and prioritization.
- Uncertainties in forecasting for preventive maintenance.
- Complexities in updating services and managing hardware.
- Highly repetitive tasks that are not automated, which increases the likelihood of errors.
- Excessive costs associated with redundancy.

Discover the power of DataMiner

In essence, DataMiner is the preferred solution for **managing complex, multi-vendor network environments** due to its comprehensive, scalable, and user-friendly capabilities, which significantly enhance **operational efficiency and effectiveness**.



DATAMINER IS FLEXIBLE AND SCALABLE

The adoption of DataMiner is driven by the complexity and scale of modern networked ecosystems. As the number of devices expands exponentially, conventional monitoring tools become inefficient due to the sheer volume and lack of interconnected insights. Organizations face the challenge of too many monitoring tools with no correlation, and DataMiner addresses this by enabling prioritization of tasks to maximize resource efficiency, thus preventing resource misallocation.

SHIFTING FROM REACTIVE TO PROACTIVE MAINTENANCE

DataMiner offers a centralized, vendor-agnostic monitoring solution that consolidates information across multiple sources, saving hours that would otherwise be spent gathering data. It facilitates proactive maintenance by identifying indicators of potential service disruptions before they occur, significantly reducing the likelihood of expensive, reactive maintenance.

AVOID VENDOR LOCK-IN WITH FLEXIBLE INTEGRATION

The platform adapts to the growing number of service outlets and distribution channels without the need for proportional increases in staff. By providing the flexibility to switch between different vendors for their unique expertise, DataMiner prevents vendor lock-in and fosters a competitive environment.

FACILITATE COMPANY-WIDE INFORMATION SHARING

DataMiner's customizable presentation layers are not limited to technical departments; they enable marketing, procurement, and business users to create tailored dashboards and share relevant information with external vendors and stakeholders without compromising security or privacy.

EMPOWER DATA-DRIVEN DECISIONS

With a 'single pane of glass' approach, DataMiner streamlines the decision-making process by displaying dependencies and critical management information where and when it is needed. This accessibility empowers users to act on actionable insights and allocate limited staff resources effectively.

You are in good hands

Skyline Communications is the global leading provider of end-to-end vendor- and domain-agnostic digital transformation solutions for the ICT media and broadband industry. The DataMiner software platform allows operators to easily tap into their technology resources and create a fully standardized, secure, and real-time digital twin of their entire operation. Its vast modular function stack offers DevOps teams a high level of versatility: AI-powered behavioral proactive monitoring, asset and inventory management, hyper-automation, process and workflow automation, and advanced capacity- and capability-aware orchestration of highly complex services. DataMiner is currently deployed by leading corporations in the ICT media and broadband industry in over 125 countries worldwide, and it is integrated with 8000 products across 1000 technology vendors. Skyline Communications has offices in Belgium, Portugal, Singapore, BiH, the UAE, and the USA, and has a permanent presence in Australia, Brazil, China, Colombia, France, Germany, India, Indonesia, Malaysia, Mexico, the Philippines, and the UK.



www.skyline.be



[skyline-communications](https://www.linkedin.com/company/skyline-communications)



[SkylineCommunications](https://www.facebook.com/SkylineCommunications)



community.dataminer.services