

BM281-4KS

CARRY-ON 4K BROADCAST DIRECTOR MONITOR

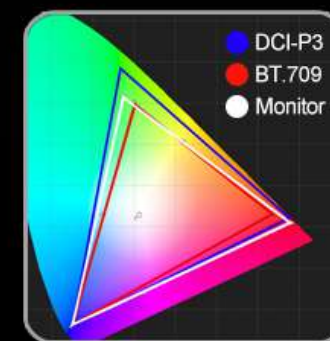
Broadcast monitor for 4K/Full HD camcorder & DSLR
Application for taking photos & making movies

28"



A Better Camera Mate

Matches with world-famous 4K/FHD camera brands, to assist cameraman in better photography experience.



Adjustable Color Space

Native, Rec.709 and 3 User Defined are optional for color space



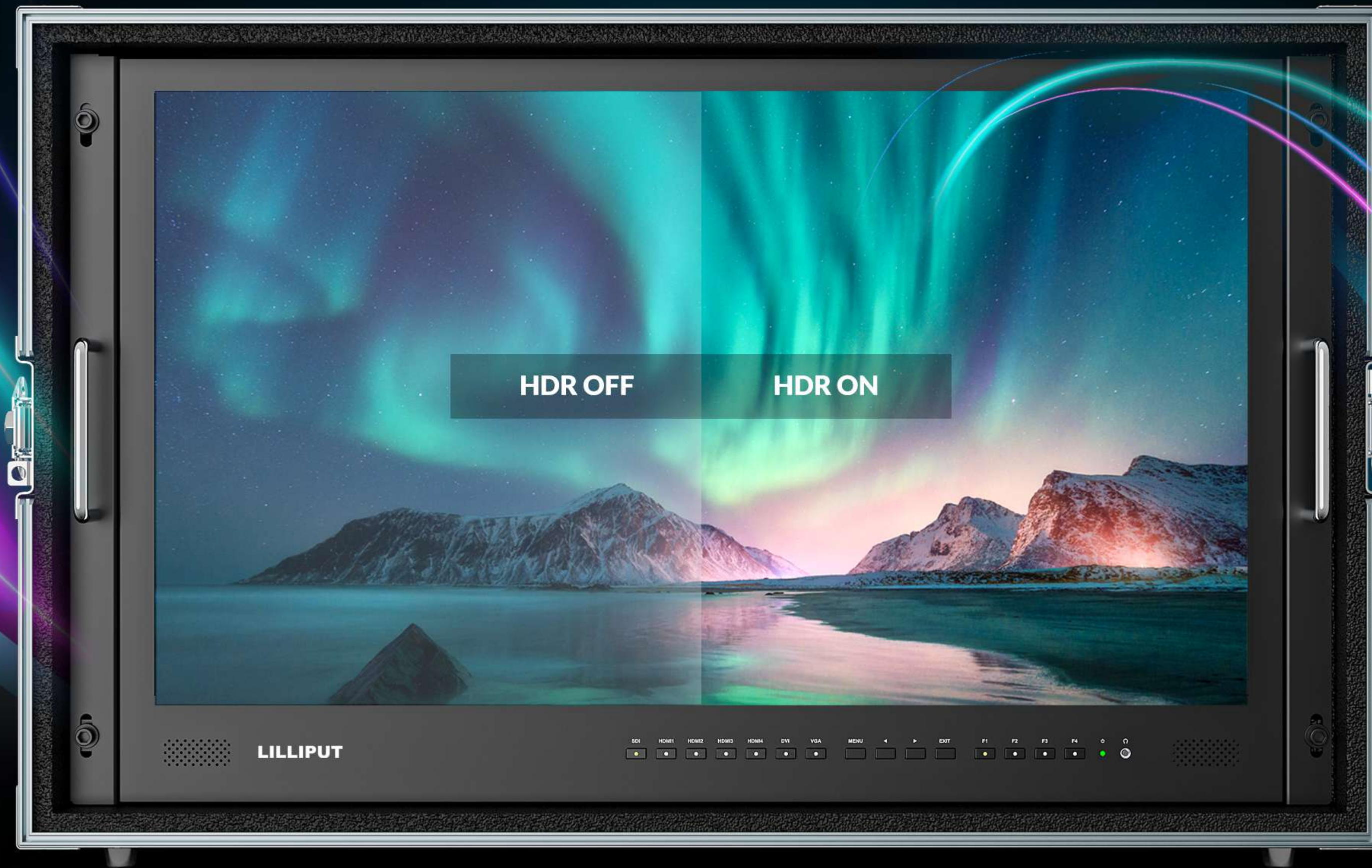
Accurate Color Calibration

A specific calibration to reproduce the colors of the image color space. Color calibration supports the PRO/LTE version of ColourSpace CMS by Light Illusion.



High Dynamic Range

When HDR is activated, the display reproduces a greater dynamic range of luminosity, allowing lighter and darker details to be displayed more clearly. Effectively enhancing the overall picture quality.



Without HDR

Inaccurate exposure, reduced image detail, unsatisfactory viewing experience.

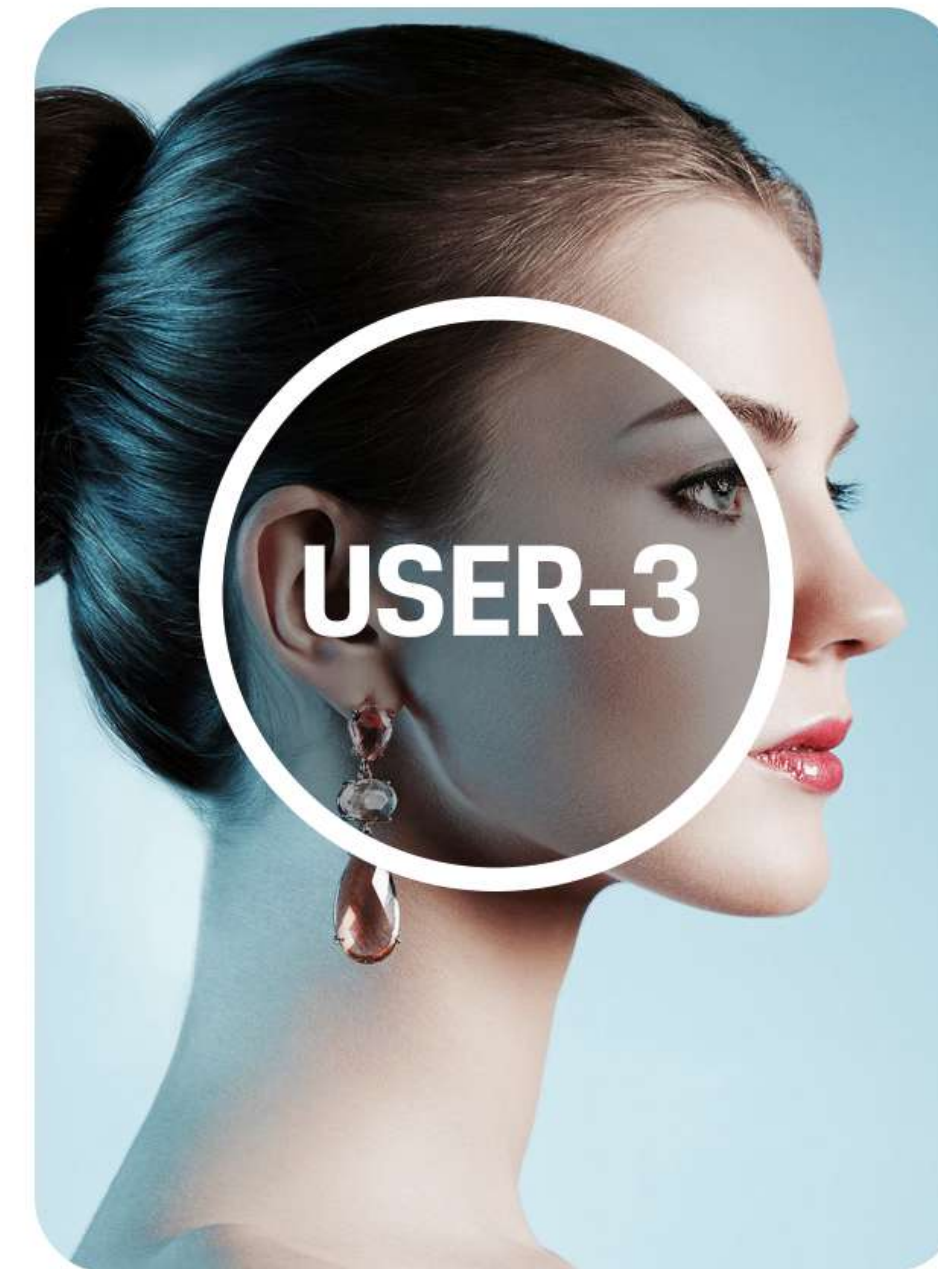
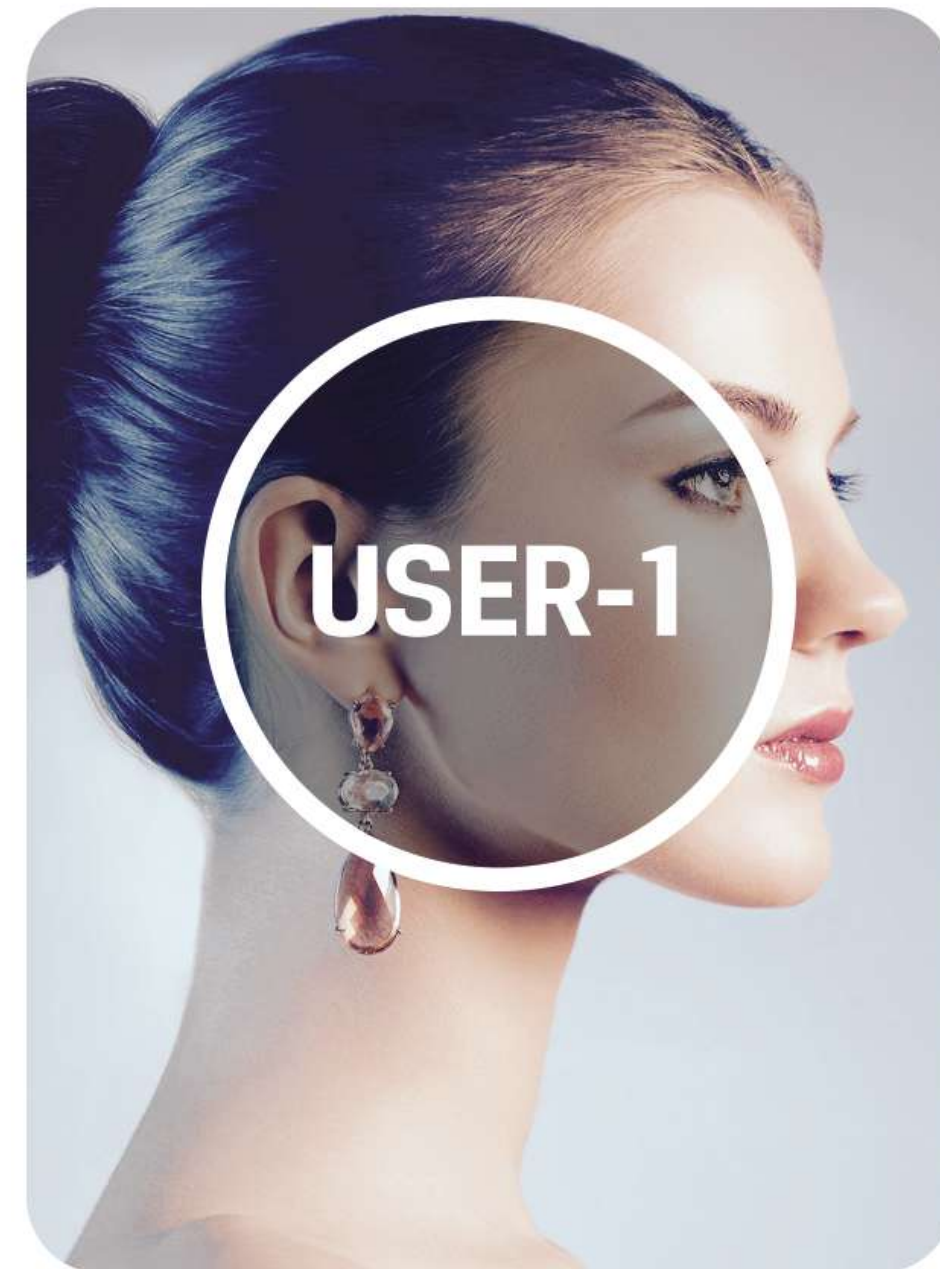
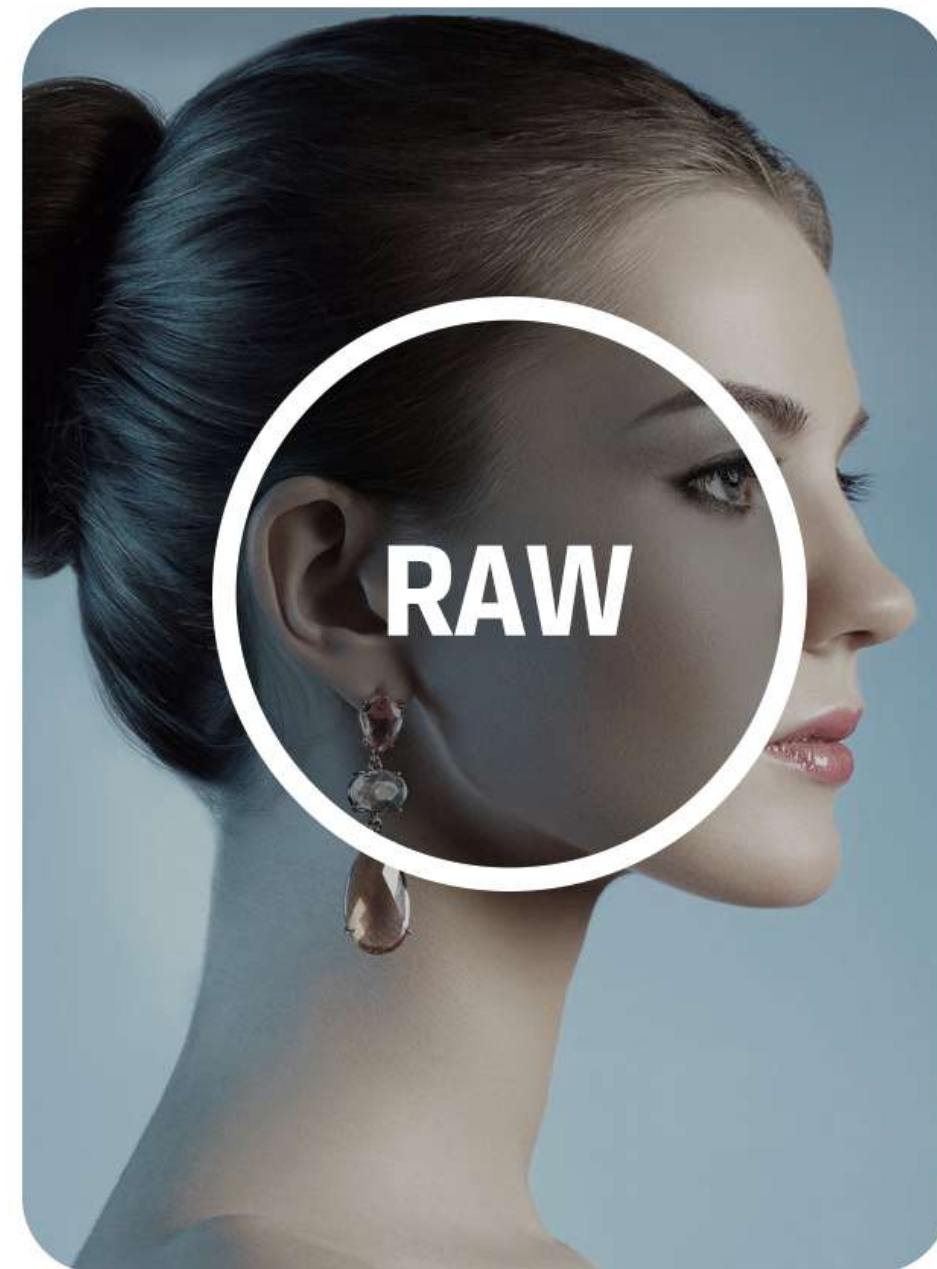


With HDR

Enjoy sharper images, greater detail and richer colors. Auto / HDR10 are for optional.

3D LUT

The function can quickly recombine color tone to form different color styles.
Built-in 3D-LUT, featuring 3 user logs.



3D LUT LOAD

Supports loading the .cube file via USB flash disk.

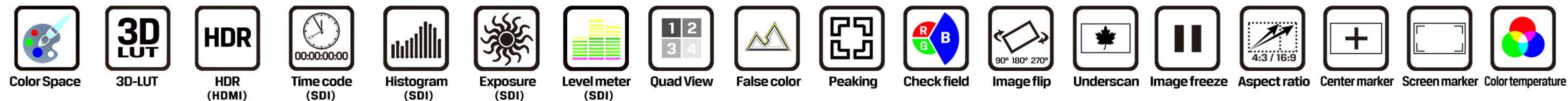


Multiple Views Display

It supports quad views splitted from different input signals simultaneously, such as SDI, HDMI, DVI and VGA.

Camera Auxiliary Functions

Plenty of auxiliary functions for taking photos and making movies, such as peaking, false color and audio level meter.



VESA 75/100MM HOLES

V-LOCK BATTERY
POWER CONNECTOR

USB FOR LUT

TALLY CONNECTOR

VGA INPUT

DVI INPUT

HDMI INPUTS

1 & 2: HDMI 2.0, support 4K 60Hz
3 & 4: HDMI 1.4b, support 4K 30Hz

AUDIO L/R

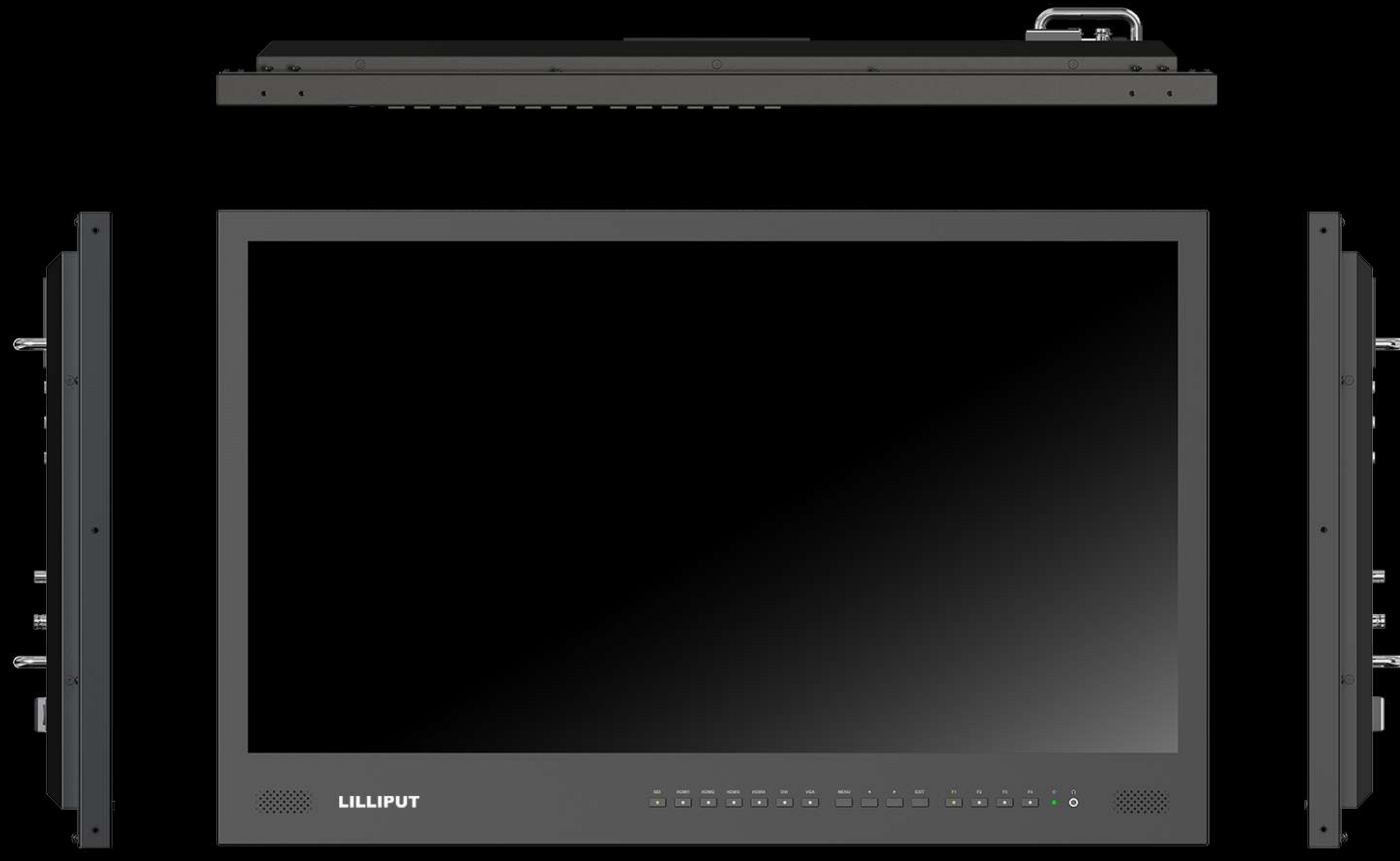
SDI INPUT & LOOP OUTPUT

POWER SWITCH

XLR POWER CONNECTOR

Easy-to-use

F1~F4 user-definable buttons to custom auxiliary functions as shortcut, such as peaking, underscan and checkfield. Use the Dial to select and adjust the value among of sharpness, saturation, tint and volume, etc.



SPECIFICATIONS / ACCESSORIES

BM281-4KS

DISPLAY	Panel	28" 10 bit
	Physical Resolution	3840×2160
	Aspect Ratio	16:9
	Brightness	300cd/m ²
	Contrast	1000:1
	Viewing Angle (H/V)	178° / 178°
INPUT	3G-SDI	1
	HDMI	HDMI 2.0×2 (support 4K 60Hz) HDMI 1.4b×2 (support 4K 30Hz)
	DVI	1
	VGA	1
	Audio	2 (L/R)
	Tally	1
	USB	1
	3G-SDI	1
OUTPUT	Speaker	2
	Ear Phone Slot	1
	Current	3.4A (15V)
AUDIO	Input Voltage	DC 12-24V (XLR)
	Battery Plate	V-mount/ Anton Bauer mount
	Power Consumption	≤51W
	Operating Temperature	0°C~60°C
POWER	Storage Temperature	-20°C~60°C
	Dimension (LWD)(mm)	663×425×43.8
ENVIRONMENT	Dimension (LWD)(with case)	761×474×173
	Weight	9kg
DIMENSION	Weight(with case)	21kg

SDI Format	SMPTE-125M	480i(59.94)
	SMPTE-274M	1080i(60/59.94/50)
		1080p(30/29.97/25/24/24sF/23.98/23.98sF)
	SMPTE-292M	1080p(30/29.97/25/24/24sF/23.98/23.98sF)
	SMPTE-296M	720p(60/59.94/50/30/29/25/24/23.98)
		720p(60/59.94/50)
	SMPTE-372M	1080i(29.97/25/24/23.98)
		1080p(60/59.94/50/30/29.97/25/24/23.98)
	SMPTE-425M	1080p(60/59.94/50)
	ITU-R BT.656	576i(50)
HDMI Format	4K, 1080p, 1080i, 720p, 576p, 576i, 480p	

ACCESSORIES

1. Folding sun shade cover	1 piece
2. Carry-on suitcase	1 piece
3. 15V 4A DC adapter	1 piece
4. Adapter fixing belt	2 pieces
5. Battery plate bracket	1 piece
6. Base bracket	1 pair
7. V-mount or Anton Bauer mount	1 piece
8. TALLY connector (in bulk)	1 piece
9. Manual	1 copy

Note: Due to constant effort to improve products and product features, specifications may change without notice.

